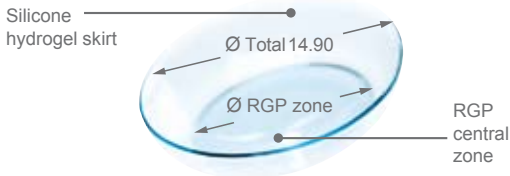




# EyeBrid<sup>TM</sup> Oblate

Silicone Hydrogel hybrid contact lens  
for post graft and post refractive surgery



## Indications

- Ultra permeable hybrid lens:
  - Post graft
  - Post refractive surgery

## Advantages

- Better centration
- Better adjustment
- Easy to fit

## Technical information

Material	100 dk + UV blocker Silicone hydrogel
Ø <sub>T</sub>	14.90 mm (available with 15,50 mm)
Ø <sub>RGP</sub>	10.00 mm
Base Curve	From 6.00 mm to 11.00 mm in 0.05 mm
Edge Lift (EL)	From -1.50 to 0.00 in 0.05 (standard -0.0)
Soft Skirt	J 0.0 (standard skirt) From -1.0 to +1.0 in 0.5 steps
Power P	From - 40.00 to + 40.00 δ in 0.25 δ steps

Available in back toric and front toric

## Wear and Care

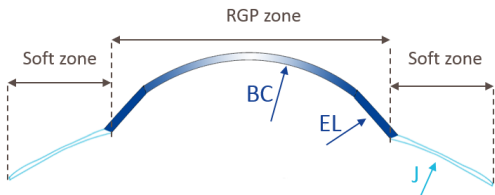
Renouvellement	Bi-annual replacement, daily wear
Care	Cleadow Soft or Ote Clean (soap) + Multipurpose solution or peroxyde
Handling	Instill 2 drops of hydration solution at lens insertion Remove with a contact lens remover or like a RGP



# EyeBrid™ Oblate

Silicone Hydrogel hybrid contact lens for post graft and post refractive surgery

## Fitting



## Parameters of the first trial lens

BC = K

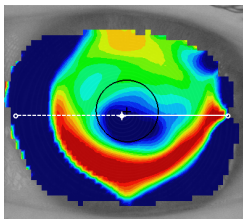
P = Spectacle refraction + vertex distance

## Example :

Topography 9.10 / 8.59

Refraction -3.75(-2.75)<sub>160°</sub>

Prescription EyeBrid Oblate 9.10 / -3.75



## Evaluate after 15 minutes of wear

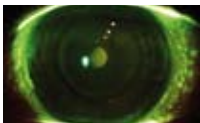
1. Control visual acuity
2. Do a slit lamp exam and evaluate as a soft lens

Verify fluorescein pattern at removal after several hours of wear

Too flat

Optimal

Too steep



Steepen BC by - 0.10 mm

Prescribe

Flatten EL by +0.1



LCS